

AREA PLAN

155 FENCHURCH STREET

LONDON, EC3

Fourth Floor

Net Internal Area

OFFICE	476.4 sq m	5128 sq ft
--------	------------	------------

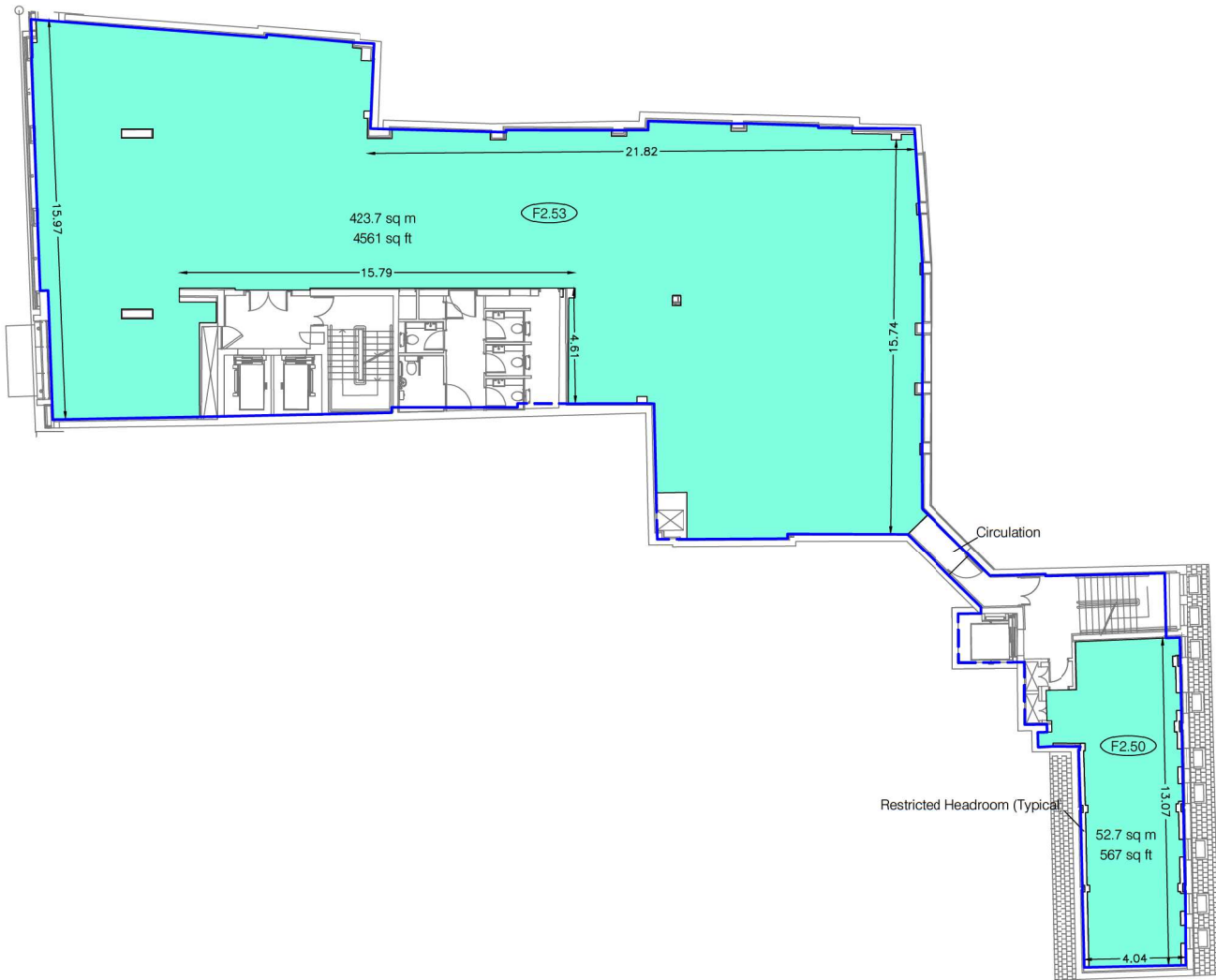
TOTAL NIA: 476.4 sq m 5128 sq ft

The following has been EXCLUDED from the TOTAL NIA:

Circulation	2.7 sq m	29 sq ft
Restricted Headroom	3.2 sq m	34 sq ft

Gross Internal Area

GIA	590.2 sq m	6353 sq ft
-----	------------	------------



LEGEND

0.00	FLOOR TO CEILING HEIGHT (METRES)
F0.00	FLOOR TO FALSE CEILING HEIGHT (METRES)

Dwg No. 36887-001-155F-A4

Issue B

April 2019

Scaled for presentation purposes

Plowman Craven

Regulated by RICS



T +44(0) 1582 765566

W www.plowmancraven.co.uk

Condition of Site:

Occupied
Vacant
Under Construction
Heavy Fit-Out
Cat A Fit-Out
Shell & Core

Notes:

This drawing complies with the RICS Code of Measuring Practice, 6th edition (September 2007) and indicates the extent of the areas quoted, produced to an accuracy commensurate with standard presentation scales. It is held in a scaled digital CAD format. Dashed line denotes assumed wall line. Wall line inaccessible at the time of survey.

The background data shown in grey has been produced by a Third-Party and is shown for reference purposes only. This data may not coincide with the extents of the on-site measurements.

Revisions:

A - Original Issue (February 2019)
B - GIA Added (April 2019)